

**CX3641 MFP**

**OKI**<sup>®</sup>  
PRINTING SOLUTIONS



**The CX3641 MFP —  
Redefining Color MFP**





## The CX3641 MFP from OKI Printing Solutions – with embedded EFI® SendMe™ and Fiery® management tools, and outstanding High Definition Color output, it's just right for your business.

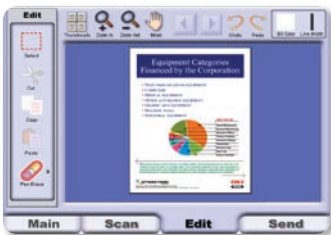
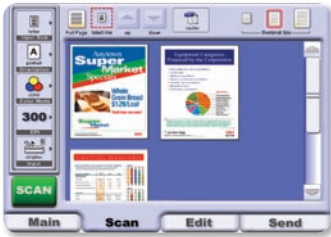
### Highlights:

- Print, copy, scan and fax for increased productivity
- Embedded EFI® SendMe™ scanning technology makes it easy to capture, manipulate and distribute electronic files—even without a PC
- Embedded EFI Fiery® System 8e Controller with Smart RIP technology for fast, automated color workflow
- Multitasking functionality includes sending or receiving a fax while printing, scanning or copying; and printing/copying while scanning
- High Definition Color printing technology for increased color depth and richer hues—even on ordinary office paper
- Single Pass Color™ Digital technology—printer handles up to 170 lb. (307 gsm) index and prints on sheets up to 12.9" x 47.24" long
- True 1200 x 1200 dpi print resolution for clear, sharp text and graphics; 600 x 600 dpi scanning resolution
- Business color printing and copying at up to 36 ppm, black & white (monochrome) at up to 40 ppm<sup>1</sup>
- 230-sheet multipurpose tray (on printer) handles a variety of media up to 4-foot banner-size sheets
- Duplex (2-sided) printing and 40 GB hard disk drive, both standard
- Color Duplex 100-sheet Auto Document Feeder (ADF)—scans both sides of a color document simultaneously
- Full-color LCD touch-screen operator panel for walk-up access to SendMe and print/copy/scan/fax functionality
- “Scan-to” destinations include e-mail addresses, network folders and mailboxes, and FTP servers
- SendMe integrates with most popular Data Management Systems (DMS) and Enterprise Content Management (ECM) systems through optional connectors
- Desktop software from Nuance®—PaperPort® 10 SE for creation of electronic files and images from hard copy originals, and OmniPage® 4.2 SE OCR to create editable text from scanned documents
- Job Accounting software and Web-based printer management utility standard
- Optional Super G3 (33.6 Kbps) analog fax capability
- Optional Finisher/Stapler and Hole Punch units
- Total support from your local Authorized OKI Printing Solutions MFP Dealer
- Toll-free, live technical assistance 24/7/365: 1.800.OKI.DATA (800.654.3282)<sup>2</sup>

<sup>1</sup> Published performance results based on laboratory testing. Individual results may vary.

<sup>2</sup> Available in the U.S. and Canada only.

# Embedded EFI® SendMe™: Redefining productivity by increasing efficiency and reducing costs



The full functionality of EFI® SendMe™—scanning, editing and sending—is available right at the MFP, on the full-color, touch-screen LCD panel.

**With touch-screen ease,** embedded EFI® SendMe™ technology in the CX3641 MFP lets users quickly convert paper documents to digital files, edit them in a variety of ways, and share, distribute or store them on- or off-site—right from the MFP.

**SendMe saves time** When a document is scanned, its image appears on the full-color LCD screen, so users don't have to return to their PCs to see the results. The intuitive interface makes it simple to remove borders, change the angle, and select specific sections to cut and paste or simply erase.

The one-stop workflow also means that users can focus on the task through its completion, reducing the types of distractions that can introduce errors and diminish productivity.

### SendMe manages documents

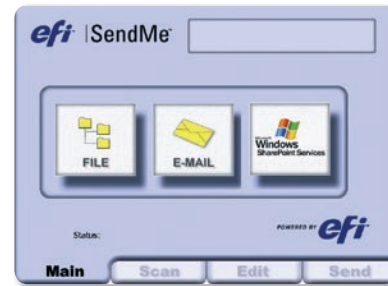
- Scans can be saved in industry-standard digital file formats (PDF, JPEG and TIFF); with the optional OCR (optical character recognition) software, files can be saved as editable and searchable PDFs or Microsoft® Word documents—enabling users to search scanned documents for words, extract text and perform document indexing.

- When a file is ready to distribute, SendMe can send it to network folders, e-mail addresses and FTP sites. The SendMe NetConnect utility can add a hidden text layer to the file (i.e., metadata, in XML or CSV format), making it compatible with many document management and enterprise content management systems.<sup>1</sup>

- Users can choose the optimum file size to provide the fastest transmission and best document quality.

- SendMe works with all leading network infrastructures, including LDAP, Microsoft Active Directory, Microsoft Exchange® and Lotus® Notes®.

And because the user is never separated from the document, the workflow cannot be broken, averting potential security issues.



**SendMe saves money** With embedded SendMe software in the CX3641 MFP, there's no need to purchase additional PC software to complete the conversion or editing processes.

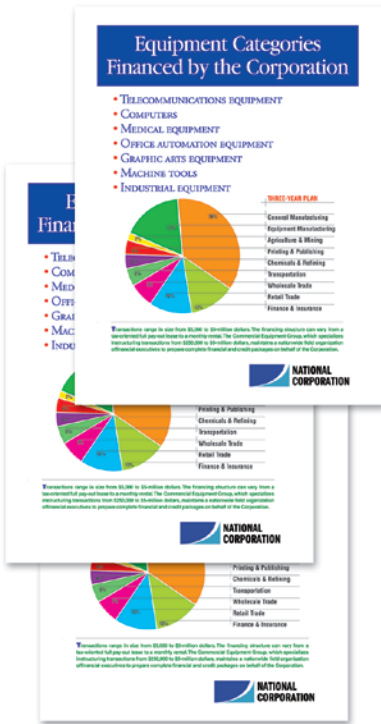
SendMe is also designated for unlimited users—everyone in the department or workgroup can enjoy SendMe's advantages without additional costly software licenses.

And the technology is so intuitive, so easy to use, that minimal training is required to get the best possible results.

<sup>1</sup> Full DMS and ECM compatibility requires optional connectors.



# Embedded Fieri® System 8e: Redefining color management for business color users



The EFI® Fieri® System 8e embedded in the CX3641 MFP ensures consistent, accurate color—page to page and job to job.

The **CX3641 MFP** is ideal for business color users with an eye for consistent, accurate color output from their office machines. They can take advantage of access to fast, incredibly precise color printing and copying through the embedded EFI® Fieri® System 8e controller and accompanying software.

Yet with all of its advanced technology, the CX3641 MFP is remarkably simple to use. Once IT administrators have established basic profiles and configurations for specific types of color usage and print jobs (see below), end users can:

- Print from virtually any business software application and get great results—even with large files—through Smart RIP technology
- Get consistent color page to page and job to job
- Produce graphic arts-quality documents with ease
- Save the time and cost of using internal repro centers or outside print vendors

### For the IT administrator, EFI Job Management and Color Management Tools

**Command WorkStation™**: automatically identifies and displays information about Fieri servers on the network; enables operators and administrators to track and manage jobs, and oversee job flow.

**Virtual Printers**: allows users to select from among preset, locked-down configurations and automatically apply custom properties to their print jobs—including color matching, media selection/mixing, even finishing options.

**EFI ColorWise™**: provides accurate color across platforms, applications and all types of media. It enables maximum control over color quality with a suite of advanced and precise tools and personalized settings.

**EFI SpotOn™**: used to create or edit spot color tables or define custom spot colors (e.g., “Corporate Red”); ensures that the CX3641 MFP will reproduce unique mixtures accurately from job to job.

**EFI HotFolder™**: provides the user with a simple and automated method for sending print files to the Fieri controller; eliminates the repetitive tasks and possibility of user error in configuring settings for multiple jobs.



### PANTONE® spot color matching is also integrated into the CX3641 MFP’s Fieri system

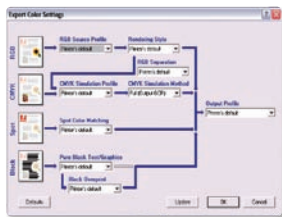
**PANTONE® Calibration**: Fieri’s ColorWise Pro Tools with PANTONE Calibration provides the highest quality output first time, every time, ensuring consistent, predictable color, reducing waste and enhancing productivity.

**PANTONE® Goe System**: In addition to the Fieri’s already comprehensive support of PANTONE libraries, EFI and PANTONE have also partnered to make the Goe library for uncoated components available to users via the embedded Fieri system.

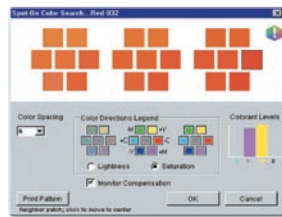
EFI Fieri System 8e comes with a full suite of management tools, including:



EFI Command WorkStation™



EFI ColorWise™



EFI SpotOn™

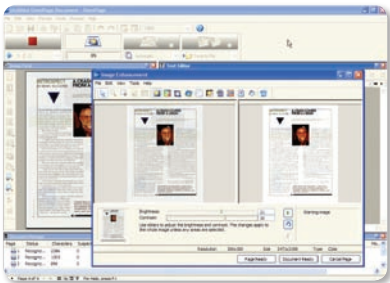


EFI Color Profiler

# Software utilities to further enhance productivity and help manage costs



Nuance® PaperPort® 10 SE



Nuance® OmniPage® 14 SE

The convenience and cost savings of the CX3641 MFP can also be harnessed from the desktop—over the network and the Web—with additional standard software supplied by OKI Printing Solutions.

## Bundled Desktop Productivity Solutions from Nuance®

**PaperPort® 10 SE:** this document management application is designed to save busy users time and money by transforming hard-copy documents into searchable digital documents. It converts paper forms into electronic forms and combines word-processing and spreadsheet files into single, universal PDF documents with drag-and-drop simplicity.

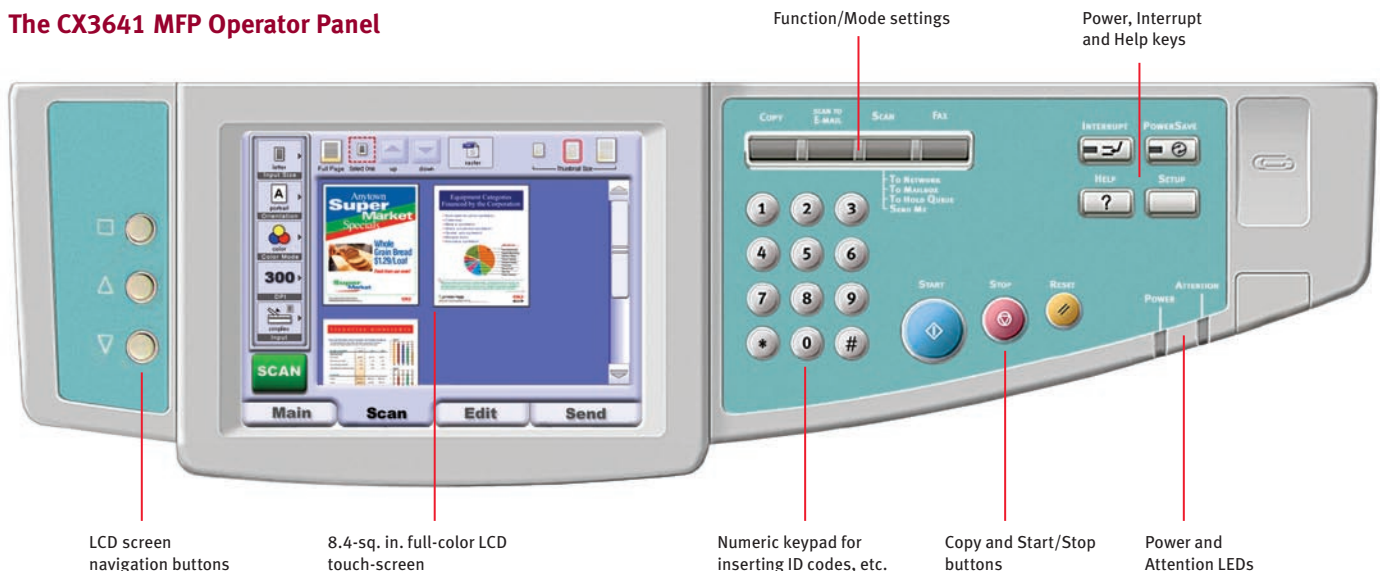
**OmniPage® 4.2 SE:** an OCR application designed specifically for network environments, it offers the highest level of accuracy and format retention, and cuts proofreading to a minimum. An ideal solution for converting and re-purposing paper documents and PDF files for editing and archiving.

## Networking Utility and Print Tracking from OKI Printing Solutions

**PrintSuperVision:** Internet-based software components that enable administrators to access and distribute printer data and control printer functionality.

**Job Accounting (Server and Client) Software:** enables tracking of color printing costs and easy monitoring and control of printer usage.

## The CX3641 MFP Operator Panel



LCD screen navigation buttons

8.4-sq. in. full-color LCD touch-screen

Numeric keypad for inserting ID codes, etc.

Copy and Start/Stop buttons

Power and Attention LEDs



# High Definition Color Printing technology ensures outstanding business color output



With HD Color



Without HD Color

## Unmatched print quality

Not only can the CX3641 MFP print and copy faster than most of its competitors, with High Definition (HD) Color Printing technology and 1200 x 1200 dpi print resolution, there is no compromise on output quality.

HD Color Printing technology renders deeper, more saturated colors, finer detail and more precise toner placement than ordinary color printers. This unique four-part process delivers fast, high-quality printing with breathtaking output, even on standard office paper. It includes:

- Multilevel LED printheads:** systematically control the amount of toner applied to each dot, increasing the color intensity. Multilevel LED printheads can achieve 256 levels of intensity, so that crisp image detail is preserved and color fidelity is maximized.
- Microfine toner:** the large color gamut and pigment density of our color toner ensures that printed documents are sharp, crisp and glossy, owing to:
  - Greater dot stability and more precise toner placement
  - Lower levels of graininess and finer detail
  - High-quality gloss finish
- Single Pass Color™ technology:** in this process, the paper medium follows a streamlined path, passing beneath four in-line printheads—one each for cyan, magenta, yellow and black (CMYK)—through the fuser, and out to the user. Simple, effective and fast.
- Printer control system:** each printer has software and firmware that provide:
  - Automatic adjustment for optimum print quality
  - Automatic alignment for sharp, clear images every time
  - Auto color checking and matching with Photo Enhance for professional photo-like quality
  - Automatic adjustment for different media weights—eliminates manual setting while maintaining the highest quality

## Get the most flexibility in your choice of media

With the CX3641 MFP, you can output reams of reports and high-impact presentations with color graphics; brochures on up to 170-lb. index (307 gsm); mailers on waterproof, tear-resistant sheets; transparencies; even attention-grabbing banners up to 12.9" by 47.24".

Use standard off-the-shelf media or select your stock from the tested—and proven—media collection available through your Authorized OKI Printing Solutions MFP Dealer.



# Control the ways in which the CX3641 MFP is used – and take control of the bottom line.



Security is built in to the EFI® Fiery® System 8e— and is an essential component of the CX3641 MFP from OKI Printing Solutions.

## Increased security for end users and the company

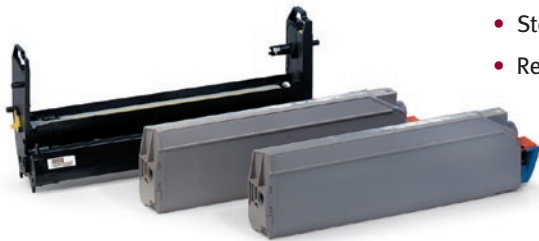
The CX3641 MFP is designed to provide peace of mind. Security features enable users and administrators to:

- Protect files from hackers through 128-bit encryption on SendMe™ files
- Prevent unsecured connections to servers through IP filtering and port-blocking features
- Link access restrictions to the company's e-mail directory (LDAP), and require user password authentication
- Limit e-mail from the MFP, with requests granted or denied based on entering of valid network passwords
- Control access privileges—such as ability to print/copy in color—through assigned Personal Identification Numbers (PINs) and LDAP user authentication
- Encrypt electronic documents and latent file images stored on the MFP's hard drive by overwriting the files with multiple passes of random characters<sup>1</sup>

## Further improve your bottom line

With outstanding reliability, long-lasting consumables and competitively low per-print and per-copy costs, the CX3641 MFP delivers cost-effective operation as well as an exceptional return on your investment. You'll control operating costs by:

- Supporting one device rather than several
- Stocking fewer replacement supplies
- Reducing service interruptions



Long-lasting consumables from OKI Printing Solutions lead to lower operating costs and a better bottom line.

Even with all of the color-centric benefits included in the CX3641 MFP, users need not pay more if they have black & white print and/or copy requirements. With a low monochrome cost per copy, the CX3641 MFP is an ideal upgrade for existing monochrome MFPs.

## Enjoy unmatched support and technical expertise

You can expect total support from your Authorized OKI Printing Solutions MFP Dealer. If you need technical assistance at any time, you can speak to a live expert 24/7/365 by calling 800.OKI.DATA (800.654.3282) toll-free.<sup>2</sup>

## The CX3641 MFP from OKI Printing Solutions: Redefining Color MFP

<sup>1</sup> Fiery Secure Erase feature provides ISO-15048 Common Criteria security assurance to the connected Fiery System; in certification with NIST (National Institute of Standards and Technology).

<sup>2</sup> Available in the U.S. and Canada only.

# CX3641 MFP

## Specifications

### Printer

- **Print Speed:** Up to 36 ppm Color; up to 40 ppm Monochrome<sup>1</sup>
- **Processor:** EFI® X8e 1 GHz Intel® Celeron®
- **File Storage:** 40 GB Hard Disk Drive
- **Print Resolution:** True 1200 x 1200 dpi
- **Duty Cycle:** Up to 150,000 pages per month
- **Connectivity:** RJ-11, RJ-45; USB v2.0
- **Network I/F:** OkiLAN® 10/100 Base-T Internal Ethernet Print Server standard
- **Emulations:** PCL® 5c, PCL 6; Adobe® PostScript® 3™ standard (Adobe 3017); Direct PDF Printing (Windows® OS only)
- **Operating Systems:** Stand-alone and network – Windows Vista® (32-/64-bit), XP (32-/64-bit), 2003 Server (32-/64-bit), 2000; Mac® OS X 10.4.3 and higher
- **Resident Scalable Fonts:** 136 Adobe PostScript fonts; 45 PCL fonts
- **Bitmap (PCL) Fonts:** Line printer, OCR-A and OCR-B

### Copier

- **Copy Speed:** Up to 36 cpm Color; up to 40 cpm Monochrome<sup>1</sup>
- **First Copy Out Time:** As fast as 12 sec. Color; 11 sec. Monochrome
- **Warm-up Time:** Less than 30 seconds
- **Operator Panel:** 8.4-sq. in. Touch-screen LCD; full-color GUI
- **Copy Resolution:** 600 x 600 dpi
- **Copy Modes:** Mixed, Text, Photo, Hi-Resolution
- **Copy Scaling:** 13 preset settings
- **Zoom Range:** 25% to 400% in 1% increments
- **Density/Sharpness Control:** 11 levels (lighter/darker)
- **Color Intensity Control:** 11 levels + 4 color presets
- **Background Removal:** 11 levels
- **Copy Quantity Selection:** 1–999 copies from original
- **Copy Features:** Mixed Media Sizes, Auto Scaling, N-up, Edge/Center Erase, Contrast, Brightness, Book Copy, Job Build, Job Offset, Duplex, Auto Tray Switching, Margin Shift
- **Size/Orientation Auto-Detect:** Differentiates between Letter/Legal, Letter/Landscape, Letter/Portrait, and Tabloid originals

### Scanner

- **Scan Type:** Duplex single-pass feed (ADF scans both sides at same time)
  - **Scan Method:** Color CCD; 24-bit color depth
  - **Scan-to-ECM:** EFI SendMe™ embedded optional ECM connectors
  - **Scan-to-Email/ Scan-to-File**
- |                                      |   |
|--------------------------------------|---|
| File Formats                         | PDF, TIFF, M-TIFF, JPEG, PCX, MS™ Word                                    |
| Protocols                            | SMTP, POP3 FTP  |
| Mail Server Authentication Protocols | LDAP, Kerberos  |
| Authentication Server Types          | MS Active Directory 2000/2003, Lotus® Domino® R6.5, MS Exchange 2000/2003 |

### Optional Super G3 Fax

- **Modem Speed:** 33.6 Kbps
- **Transmission Speed:** 3 sec./pg.<sup>2</sup>
- **Fax Resolution:** Standard 200 x 100 dpi; Fine 200 x 200 dpi; Photo 200 x 200 dpi
- **Broadcast Transmission:** 100 stations max.
- **Fax Functions:** 10-Key dial, One-Touch dial, Speed dial, Group dial (10 groups max.), Auto redial, Delayed transmission
- **File Compression Modes:** MH, MR, MMR

### Networking

- **Auto Protocol and Port Switching**
- **IPv6 Support and SSL Support:** IP over SSL, LDAP over SSL
- **SNMP v3 Support**
- **Auto IP:** DHCP and BOOTP
- **NDS and SMB Support**
- **AppleTalk® and NetWare 6 Compliant:** IPP, NDDS gateway printing, point-and-print
- **Port 9100 (with BiDi Support)**
- **IPP Support**
- **Bonjour Support** (formerly Rendezvous)

### System Memory

- **Standard/Maximum Imaging RAM:** 1 GB
- **Scan Buffer RAM:** 128 MB
- **Image Processing RAM:** 384 MB
- **Scanner Flash Memory:** 512 KB

### Paper Handling

- **Scanner ADF:** Up to 100 sheets, 16 lb. – 28 lb. bond (80 gsm)
- **Printer Paper Input:** 2,120 sheets standard (1 x 530-sheet tray + 1,590-sheet High-capacity Feeder)
- **Manual Feed Input:** 230 sheets – mailing label stock, envelopes, banners up to 12.9" x 47.24" (32.7 cm x 120 cm)
- **Paper Weight:** Trays 1 thru 4 – 17 lb. bond–80 lb. cover (64–216 gsm); Multipurpose tray – 17 lb. bond–170 lb. index (64–307 gsm); duplex – 20 lb. bond–65 lb. cover (75–188 gsm) for letter and tabloid sheets
- **Automatic Duplexer:** 2-sided printing standard

### Optional Finisher

- **Features:** Sort/Non-sort, Staple, Punch, Book bind
- **Number of Trays:** 2
- **Paper Capacity:** 1,000 sheets
- **Paper Size:** Up to 11" x 17"
- **Max Number Sheets for Stapling:** 50 sheets
- **Stapling Positions:** Single- and multi-staple; edge and center (saddle-stitch)

### Optional Hole Punch Unit

- **Hole Punching:** 2- and 3-hole punch

### Environmental

- **HxWxD without Finisher:** 54.88" x 26.48" x 34.59" (139.3 cm x 67.2 cm x 87.8 cm)
- **HxWxD with Finisher:** 54.88" x 57.01" x 34.59" (139.3 cm x 144.7 cm x 87.8 cm)
- **Height with Scanner Stand Fully Extended:** 71.43" (181.3 cm)
- **Weight without Finisher:** 434.31 lb. (197 kg)
- **Weight with Finisher:** 601.86 lb. (273 kg)
- **Power Consumption:** Typical 750W, Peak 1500W, Idle 200W (average), Power Save Mode: <80W
- **Acoustic Noise:** Operating: 58 dB(A) or less, Standby: 42 dB(A) or less, Power save: 28 dB(A) or less
- **ENERGY STAR® Compliance:** Yes

For more information on the CX3641 MFP and supplies, including OKIcare® Extended Service Programs: **1.800.OKI.DATA** (800.654.3282).<sup>3</sup>

<sup>1</sup> Letter-size sheets. Published performance results based on laboratory testing. Individual results may vary.

<sup>2</sup> Based on ITU-T Test Chart #1.

<sup>3</sup> Available in the U.S. and Canada only.



Specifications are subject to change without notice.

© 2008 Oki Data Americas, Inc. OKI Reg. T.M., M.D., OKIcare, OkiLAN Reg. T.M., Oki Electric Industry Co., Ltd. Single Pass Color T.M. and design Reg. T.M., Oki Data Corp. EFI, Fiery Reg. T.M., ColorWise, Command WorkStation, SpotOn, Hot Folder T.M. EFI Inc. PANTONE Reg. T.M., PANTONE Calibrated T.M., PANTONE, Inc. Adobe, PostScript, Acrobat Reg. T.M., Postscript 3 T.M., Adobe Systems Inc. Microsoft, Windows, Windows NT Reg. T.M., Microsoft Corp. PCL, Reg. T.M., Hewlett-Packard Co. Apple, Mac, ColorSync Reg. T.M., Apple Inc. Intel Reg. T.M., Intel Corp. ENERGY STAR Reg. T.M., U.S. EPA. USB-Logo T.M. Universal Serial Bus Implementers Forum, Inc.

Printed in the USA

MS15902-0708

**OKI®**  
PRINTING SOLUTIONS